



HYDRA18

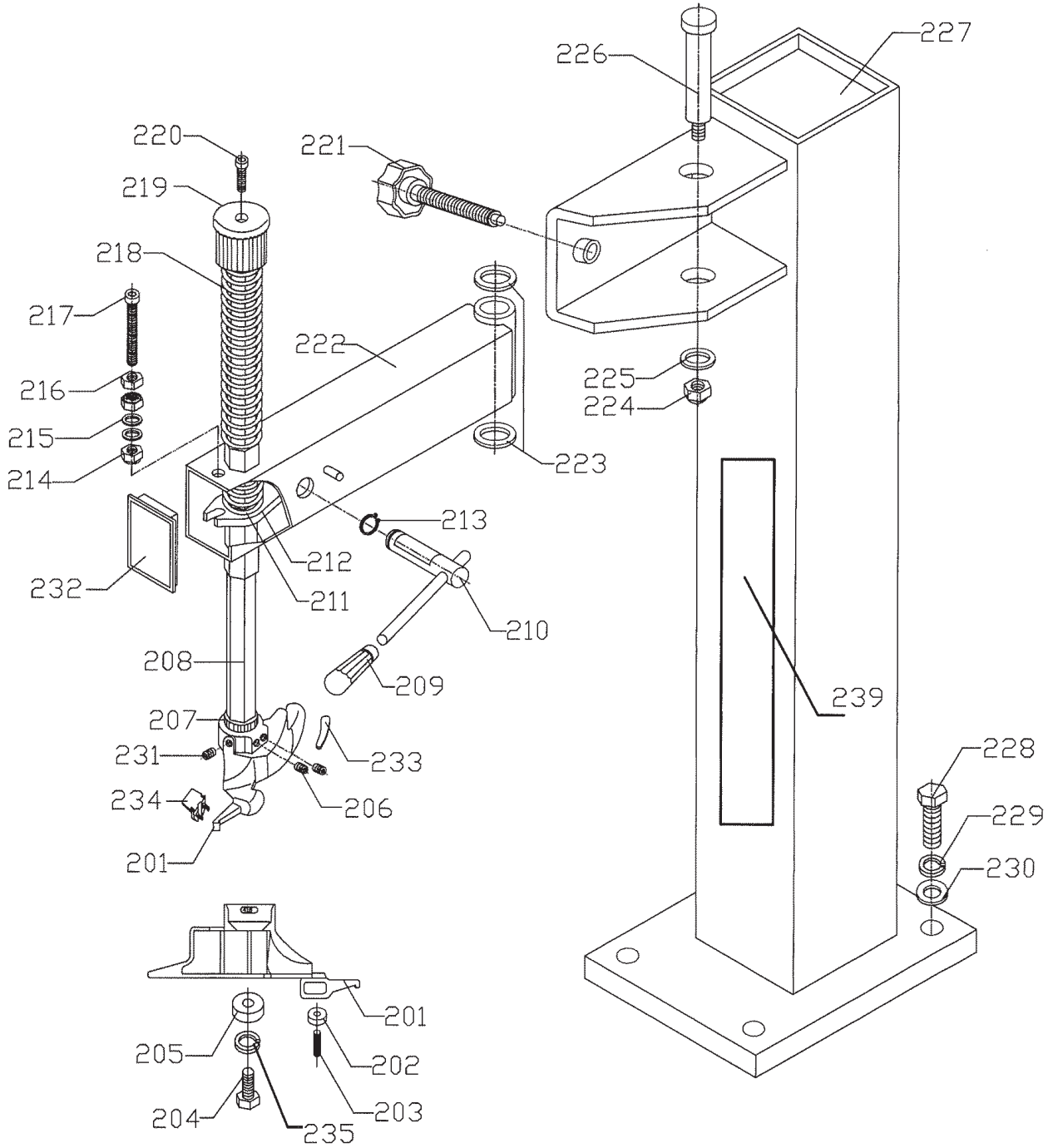


**SMONTAGOMME
SEMIAUTOMATICO**



**SEMI-AUTOMATIC
TYRE CHANGER**

COLONNA	
POST	SÄULE
COLONNE	COLUMNNA



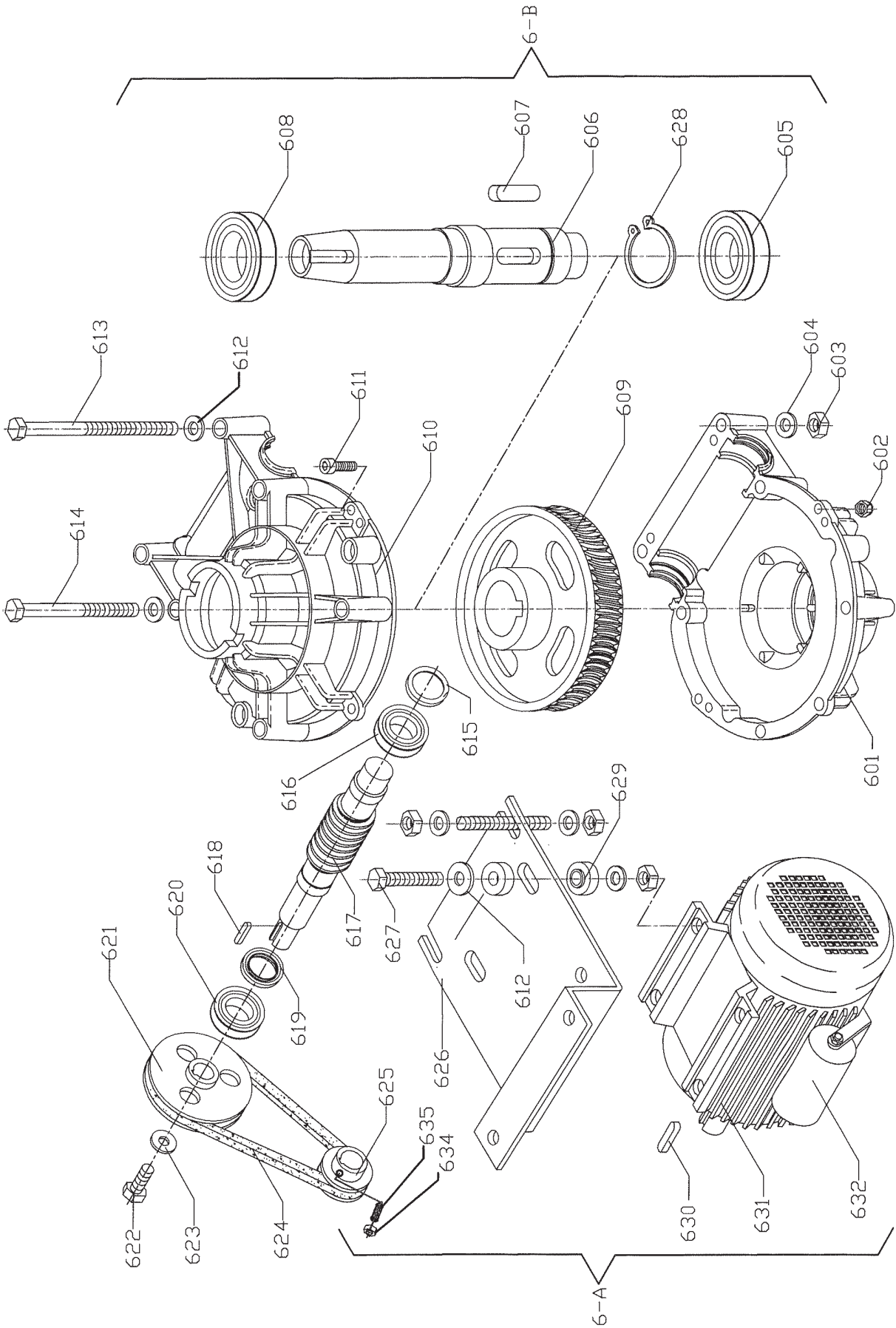
MOTORE/RIDUTTORE

MOTOR/GEAR BOX

ELEKTRO-MOTOR/UNTERSETZER

MOTEUR ÉLECTRIQUE/REDUCTEUR

MOTOR ELÉCTRICO/REDUCTOR



STALLONATORE

BEAD-BREAKER

REIFENABDRÜCKER

DÉTALONNEUR

DESTALONADOR

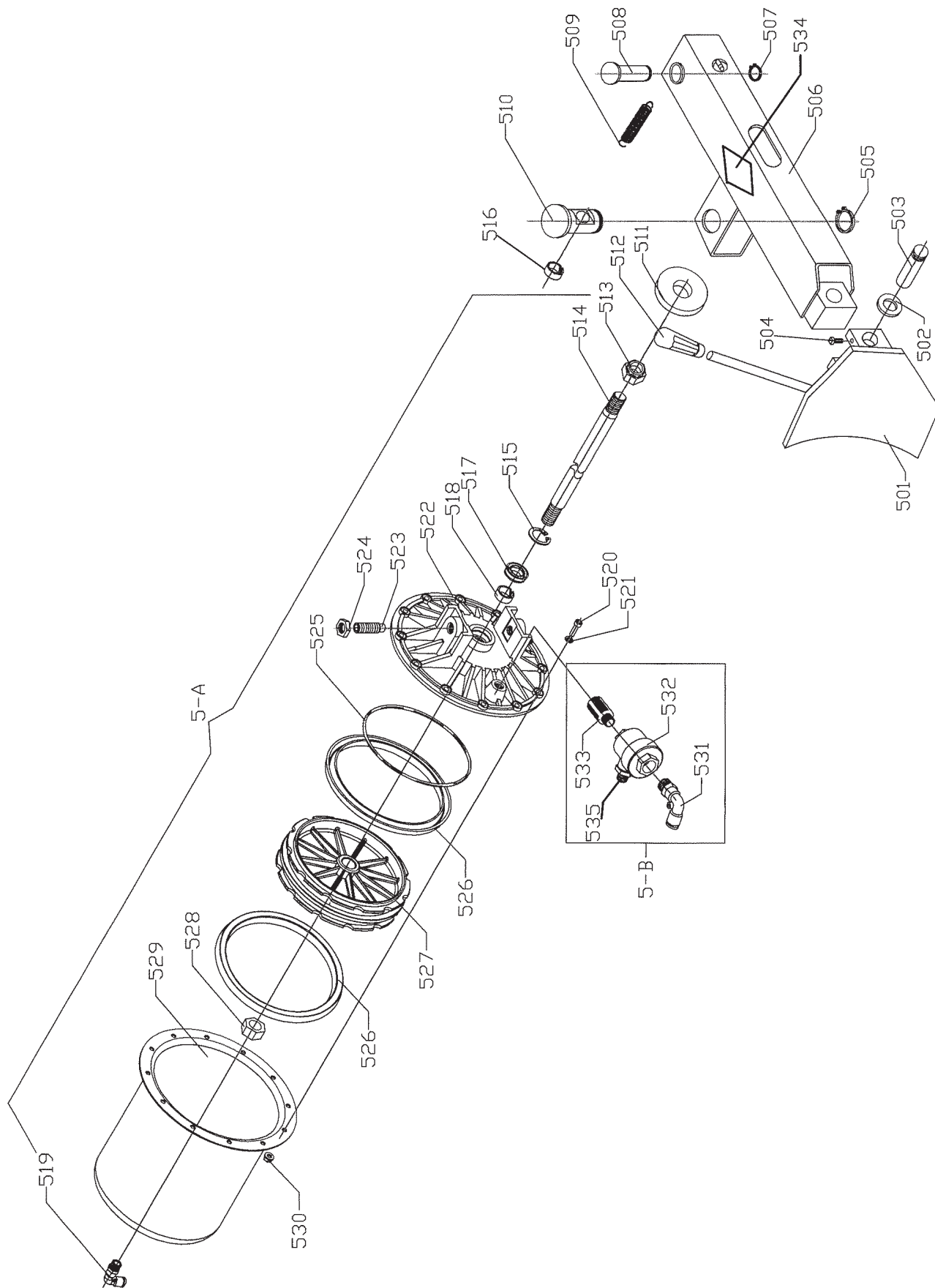


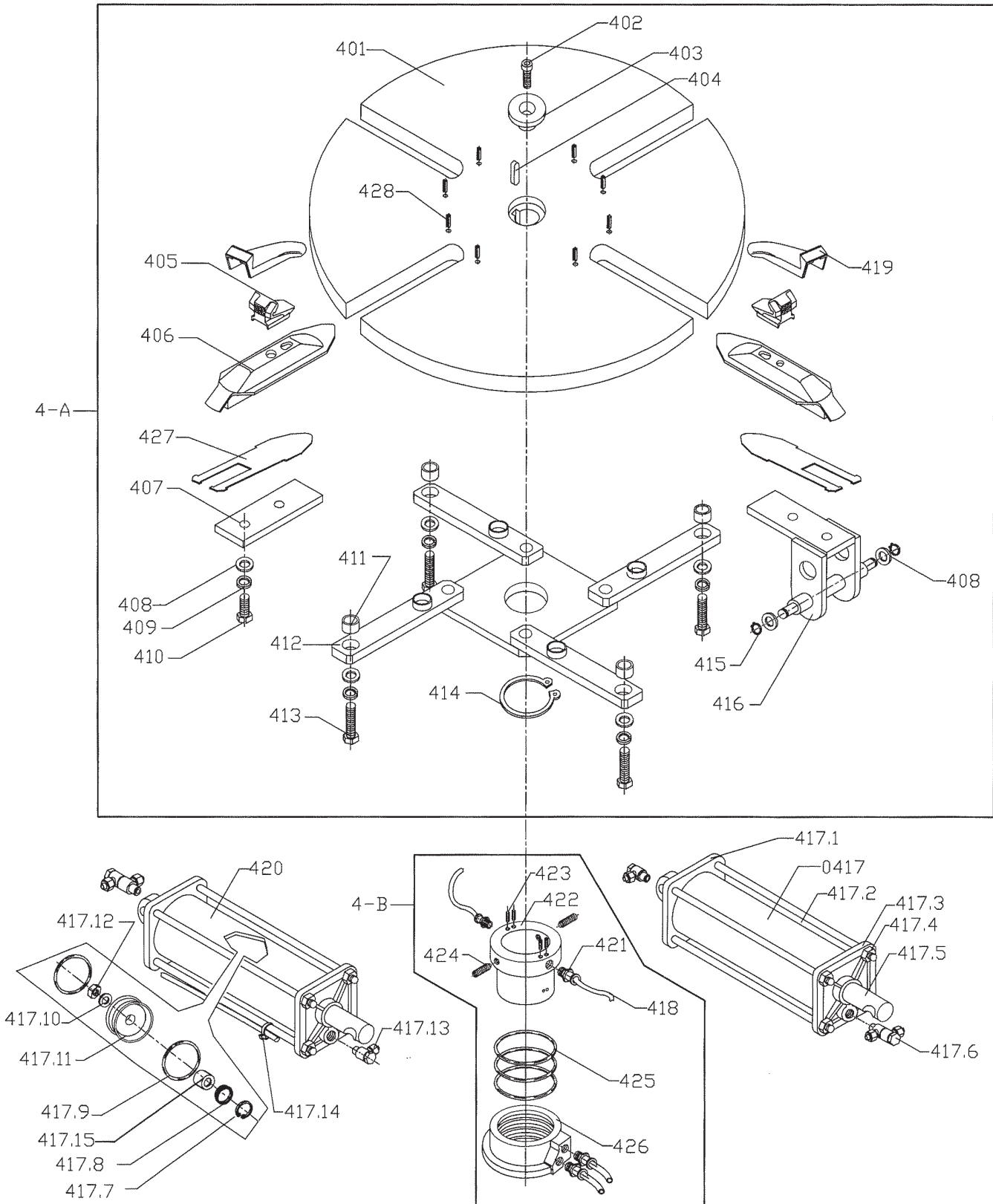
TAVOLA AUTOCENTRANTE

TURNTABLE

AUFSPANNTISCH

TABLE AUTOCENTREUSE

TABLA AUTOCENTRADORA



Ref.	Code	Description	Specification	Q'ty	Note
401	T-18Y.00.01	Turntable		1	
402		Screw	M12X30	1	
403	T-18Y.00.02	Turntable cap		1	
404		Disk key	10X45	1	
405	T-18Y.00.03	Clamp		4	
406	T-18YK.01.04.00	Slide		4	
407	T-18Y.00.09	Slide plate		2	
408		Flat washer	12	12	
409		Elastic washer	12	8	
410		Screw	M12X30	4	
411	T-18Y.00.08	Washer		4	
412	T-18Y.00.06.00	Connecting plate		4	
413		Screw	M12X83	4	
414		Seeger ring	65#	1	
415		Seeger ring	12#	4	
416	T-18Y.00.05.00	Cylinder bracket		2	
417	T-18X.00.00A	Cylinder assembly	∅70X262	2	
417.1	T-18X.00.05	Cylinder rear housing		2	
417.2	T-18X.00.06	Union	M8	8	
417.3	T-18X.00.02A	Cylinder front housing		2	
417.4		Locknut	M8	8	
417.5	T-18X.00.01A	Shaft for cylinder		2	
417.6		Union	∅6	2	
417.7		Seeger ring	30#	2	
417.8		Y-ring	∅30X20X7	2	
417.9		O-ring	∅70X2.65	4	
417.10		Flat washer	12	2	
417.11		Piston	∅70X22X11.7	2	
417.12		Locknut	M12	2	
417.13		Union	∅6	2	
417.14		Nylon strap	4X150	6	
417.15		Wearable spacer	∅20X23X20	2	
418		PU hose	∅6X4	some	
419		Clamp cover		4	
420	T-18X.00.03	Cylinder body		2	
421		Union	G1/8" ∅6	4	
422	T-J.00.02	Rotate union(inside)		1	
423		Screw	M3X6	4	
424		Screw	M6X20	2	
425		O-ring	∅60X2.65	3	
426	T-J.00.03	Rotate union(outside)		1	
427	T-18YK.01.02A	Wearable spacer		1	
428		Spring pin	∅4X16	8	
4-A	T-18Y.01.00	Turntable assembly		1	
4-B	T-J.00.00	Rotate union complete		1	

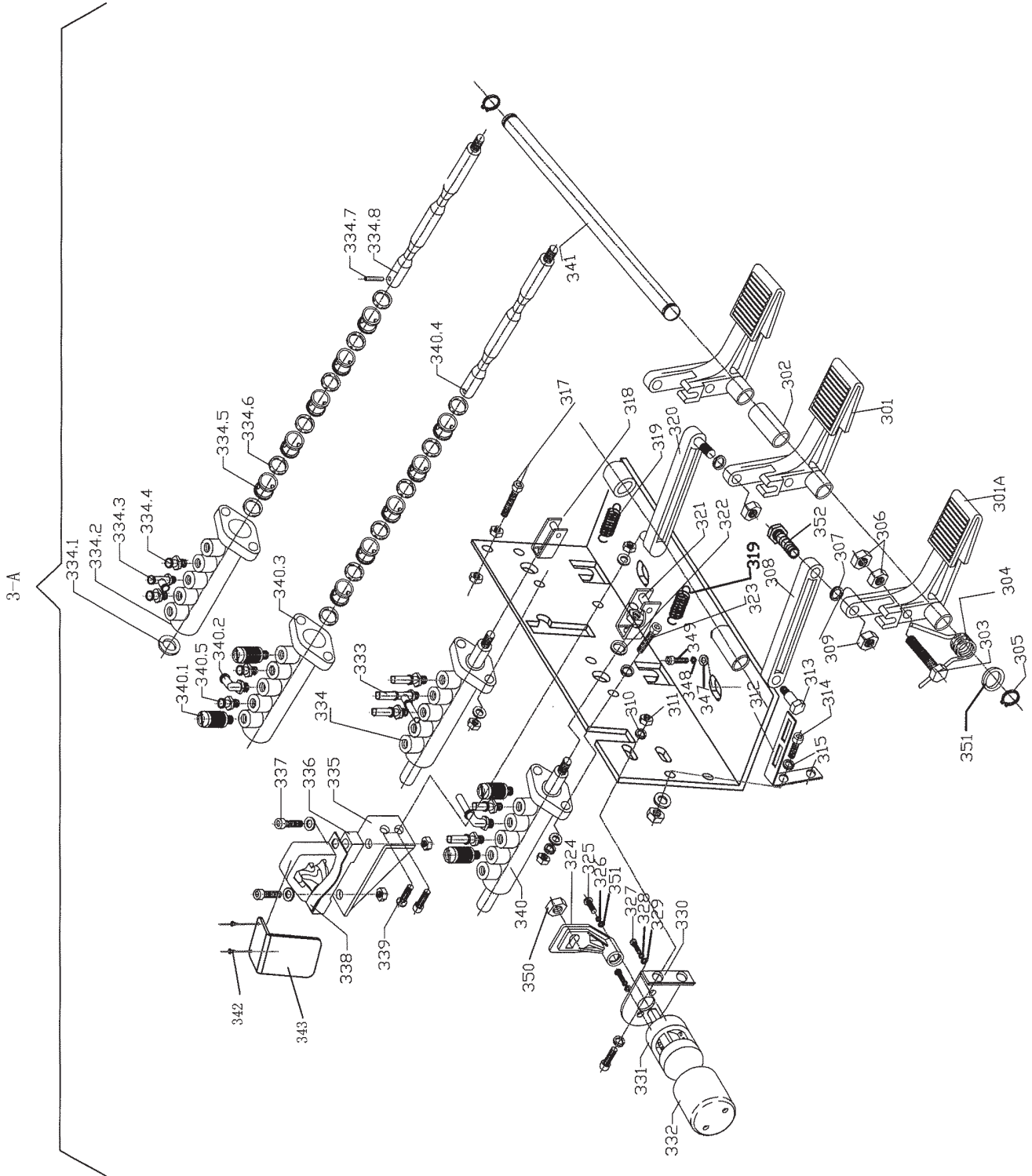
PEDALIERA

PEDALS-PLATE

PEDAL

PÉDALIER

PEDALERA



Ref.	Code	Description	Specification	Q'ty	Note
301	T-D. 02. 12B	Pedal		2	
301A	T-D. 02. 12C	Pedal		1	
302	T-D. 02. 01	Spacer pedal		1	
303		Screw	M8X55	1	
304	T-D. 02. 02	Spring		1	
305		Seeger ring	14#	2	
306		Nut	M8	2	
307	T-D. 02. 25	Spacer		2	
308	T-D. 02. 22A	Connecting rod		1	
309		Locknut	M8	3	
310		Flat washer	6	8	
311		Nut	M6	10	
312	T-D. 02. 21A	Bracket		1	
313	T-D. 02. 26A	Spindle		1	
314		Screw	M6X16	5	
315		Elastic washer	6	8	
316	T-D. 03. 01	Pedal bracket		1	
317		Screw	M6X30	1	
318	T-D. 02. 15	Bracket		2	
319	T-D. 02. 04	Spring		2	
320	T-D. 01. 09	Connecting rod		1	
321		Locknut	M8	2	
322	T-D. 02. 10	Spacer		1	
323		Screw	M5X25	4	
324	T-D. 02. 23A	Reverse lever	□ 6	1	
325		Pin	4X12	1	
326		Elastic washer	∅4	1	
327		Pin	M3X10	2	
328		Elastic washer	∅3	2	
329		Flat washer	∅3	2	
330	T-D. 02. 16	Switch bracket		1	
331		Reverse switch	16A	1	
332		Switch cover		1	
333		PU hose	∅ 8X5	SOME	
334		valve assembly		1	
334.1		Flat washer	10	1	
334.2	T-D. 02. 14	Valve body		1	
334.3		Union	G1/8"-∅8	1	
334.4		Union	G1/8"-∅8	4	
334.5	T-D. 02. 08	Spacer		10	
334.6		O-ring	∅ 17X4	12	
334.7		Spring pin	∅ 4X20	1	
334.8	T-D. 02. 13A	Valve pin		1	
335	T-D. 02. 05	Cam bracket		1	
336	T-D. 01. 10	Cam		1	
337		Screw	M6X25	2	
338		Fork plate spring		1	
339		Screw	M6X16	1	
340		Valve assemble		1	
340.1		Silencer	G1/8"	4	
340.2		Union	G1/8"-∅8	1	
340.3	T-D. 02. 14	Valve body		1	
340.4	T-D. 02. 07	Valve pin		1	
341	T-D. 02. 20	Spindle		1	
342		Self-tap pin	M3X10	2	
343		Cam plate		1	
344		Flat washer	∅ 5	8	
345		Elastic washer	∅ 5	4	
346		Nut	M5	4	
347		Flat washer	∅ 10	2	
348		Elastic washer	∅ 10	2	
349		Screw	M10X25	2	
350		Locknut	M6	1	
351		Flat washer	∅ 4	1	
352		Screw	M8X40	1	
353					
354					



Dichiarazione di conformità - Declaration of Conformity
Konformitätserklärung - Déclaration de conformité
Declaración de conformidad - Overensstemmelseserklæring
Samsverserklæring - Överensstämmande intyg
EG-Conformiteitsverklaring



WERTHER INTERNATIONAL S.p.A.
Via F.Brunelleschi, 12 42040 CADE' (Reggio Emilia) Italy
Tel.++/+522/9431 (r.a.) Fax ++/+522/941997

con la presente dichiariamo che lo smontagomme modello
déclare par la presente que le monte-demonte pneus modèle
hereby we declare that the tyre changer model
hiermit erklären wir, daß das Reifenmontiergerät
por la presente declara, que l'elevador modelo

HYDRA18

I

è stato costruito in conformità alle normative 73/23 CEE - 89/336 CEE e 98/37/CE

F

a été construite en conformité avec les normes 73/23 CEE - 89/336 CEE et 98/37/CE

GB

was manufactured in conformity with the normes 73/23 CEE - 89/336 CEE and 98/37/CE

D

in Übereinstimmung mit den Richtlinien 73/23 CEE - 89/336 CEE und 98/37/CE hergestellt ist.

E

ha sido fabricado según las disposiciones 73/23 CEE - 89/336 CEE y 98/37/CE

N

ble produsert i samsvar med direktivene 73/23/ EEC,89/336 EEC 98/37/ EEC).